

ADELAIDE INTERNATIONAL CORPORATE HOSPITALITY COURTSIDE CLUB

The 2022 Adelaide International Week 1 will be a combined ATP 250 Men's and WTA 500 Women's event. The Tournament will be hosted from Monday 3 January to Sunday 9 January over 13 sessions (day, night and twilight).

The 2022 Adelaide International Week 2 will be a combined ATP 250 Men's and WTA 250 Women's event. The Tournament will be hosted from Monday 10 January to Saturday 15 January over 11 sessions (day, night and twilight).

ENTRY GATES

All valid ticket holders and Corporate Suite ticket holders will be able to access the event via the main entrance located on Memorial Drive.

All entrances accommodate wheelchair access.

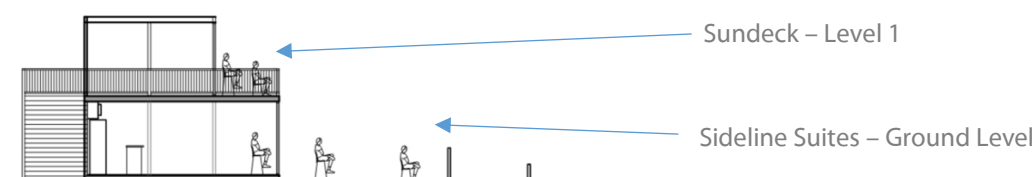
LOCATION

We look forward to welcoming you in the Courtside Club, our premium seating area located on the West side of centre court.

The Courtside Club comprises of two levels:

- Sideline Suites (Ground level)
- Sundeck (Level 1)

All areas provide a shared indoor area and outdoor seating under the canopy. This prime location overlooks all the action on centre court and offers air-conditioned indoor comfort alongside covered outdoor viewing.



COURTSIDE CLUB BAR

You will have exclusive access to the Courtside Club Bar located at the back of the shared indoor area allowing you to mingle with guests.

DRESS CODE

Smart Casual

VACCINATION REQUIREMENTS

Any patrons aged 12 and over attending the Adelaide International at Memorial Drive must be fully vaccinated against COVID-19 or have a valid medical exemption. For full details in regards to vaccination requirements for the Adelaide International, please refer to the Adelaide International Premium Experience T&C's .

ARRIVAL

All guests must present a ticket upon arrival for entry. Guests will be issued with a wristband to be worn for the entirety of the session to enable re-entry. Wristbands are non-transferable as they enable access into the exclusive suites.

ARRIVAL TIMES

DAY SESSION (all sessions except Saturday 8 and Friday 14 Jan)

- Gates Open: 10:00am
- **Courtside Club Open: 10.00am. Bar open: 11.00am**
- Match Starts: 11:00am

DAY SESSION – Saturday 8 and Friday 14 January

- Gates Open: 11:00am
- **Courtside Club Open: 11.00am**
- Match Starts: 12:00pm

NIGHT SESSION

- Gates Open: 5:00pm
- **Courtside Club Open: 6.30pm***
- Match Starts: 7:00pm

TWILIGHT SESSION - FINALS

Sunday 9 January and Saturday 15 January

- Gates Open: 1:00pm
- **Courtside Club Open: 1.30pm**
- Match Starts: 2:00pm

* Please note that the event runs a day session and night session from Monday to Saturday (Week 1) and Monday to Friday (Week 2). It is not uncommon for day sessions to run late as this is a competitive event. Gates open for your guests to enter the venue including the centre court area at 5:00pm. The Courtside Club opens at 6:30pm. If day session matches are still in progress past 6:30pm then your guests are welcome to walk the complex including the outside courts where players may be practicing and matches may still be operating. They are also welcome to have a drink in the public bars. Once the day session is completed the venue will require 10- 15 minutes to clean and re-set the corporate facility for the comfort of your guests. Note: this is only for the night session and if matches run past 6:30pm for the day session.

CLOAKROOM FACILITIES

Cloaking facilities are not available at Memorial Drive Tennis Centre. Items prohibited at the Memorial Drive Tennis Centre cannot enter the venue. Please take time to review the list of prohibited items. This list can be found in the Adelaide International Conditions of Sale and Entry. If in doubt, leave it at home.

PASS-OUTS

Pass-outs will be allowed. Please ensure that you retain your valid event ticket as you will be required to scan your event ticket on exit and again on re-entry.

FIRST AID

First Aid will be available on site.

TOILETS

Toilets are located at various positions around Memorial Drive Tennis Centre. Please bear in mind that toilets are only accessible after gates open.

ATM/EFTPOS FACILITIES

ATMs located on the Adelaide Oval Telstra Plaza (Commonwealth, ANZ and Bank SA). There are no ATMs within the Memorial Drive Tennis Centre.

NO SMOKING VENUE

Memorial Drive Tennis Centre is a non-smoking venue. There are limited designated smoking areas available outside the venue. Please ensure you receive a pass-out to ensure re-entry is permitted.

BAGS

Bags may be subject to a random safety and security search upon entry. Please remember bags too large to fit under a seat cannot be brought to the Memorial Drive Tennis Centre.

WEATHER

The Adelaide International is an outdoor event. It is recommended that patrons bring appropriate protection from sun and rain (i.e. hats, sunscreen, raincoats and warm clothing) even if seated inside corporate facilities.

PROHIBITED ITEMS

For the comfort and safety of patrons and players the following items are not allowed into the Memorial Drive Tennis Centre:

- Alcohol; animals except service animals (e.g. seeing eye dogs); any item that could be used as a weapon; beach balls and other inflatable devices, audio recorders; bicycles, scooters, skateboards and roller-blades/skates; camera tripods, monopods, telephoto camera lenses with a focal length capacity of greater than 200 mm; video cameras and handy-cams; drink and food cans; chairs and stools; eskies and hampers; fireworks; frisbees; helium balloons; glass (including bottles); large containers in excess of 1.5 litres; flags, banners or signs larger than 1.2 m wide or with handles longer than 50 cm in length; musical instruments and/or amplification equipment; unauthorised advertising or marketing material or flyers; laser pointers, distress signals, whistles or loud hailers; dangerous goods and any other item prohibited by legislation.

Note: prams and strollers are not permitted in seating areas.

PARKING

Wilson (30 Hindley St) and **Adelaide Central Car Park** (225 North Terrace) are just a short walk over the bridge to War Memorial Drive.

Book now: <https://www.wilsonparking.com.au/find-a-park>

UPark on Gawler

Book now: <https://upark.com.au/locations/gawler/>

Adelaide Convention Centre – [the Riverbank Car Park and North Terrace Car Park](#)

Adelaide Oval Parking

> [Parking Map](#)

> [Adelaide Oval pre-book online here](#)

ACCESSIBLE CAR PARKING

We have limited reserved accessible parking located out the front of Next Gen Health Clubs and the Memorial Drive Tennis Centre, adjacent to Pinky Flat. This drop off zone must be accessed from the western side via Montefiore Road or Morphett Street Bridge (disability permit holders only).