



ADELAIDE INTERNATIONAL



EVENT GUIDE

6-11 JANUARY 2025
THE DRIVE



TABLE OF CONTENTS

<u>ABOUT THE ADELAIDE INTERNATIONAL</u>	03
<u>WHAT'S ON</u>	04
<u>GATE OPENING TIMES</u>	05
<u>GETTING THERE</u>	06
<u>VENUE MAP</u>	07
<u>TICKET FAQs</u>	08
<u>EVENT FAQs</u>	09
<u>MERCHANDISE</u>	11
<u>PREMIUM EXPERIENCES</u>	12
<u>RACQUETS AND STRINGS</u>	15
<u>CONNECT WITH US</u>	16



ABOUT THE ADELAIDE INTERNATIONAL

Welcome to the 2025 Adelaide International, a premier sporting and entertainment event happening at The Drive from 6 to 11 January 2025. This world-class tournament features top-tier tennis action, with both WTA 500 and ATP 250 matches. The excitement unfolds on Centre Court, where high-stakes matches are complemented by a vibrant array of off-court activities, including Kids' Day celebrations, Racquets and Strings local artist performances, the Entertainment Zone at Pinky Flat and much more, creating a dynamic vibe at The Drive.

The event kicks off with a band on January 6, with our biggest Kids' Day yet. Families can enjoy tennis, inflatable games, giant games, face painting, meet players and take part in a thrilling water slide adventure. After Kids' Day, explore the venue and experience world-class tennis on Centre Court, The Sunken Showcourt and outside courts. You may even catch some of tennis' biggest stars on the practice courts.

On Friday 10 January, we proudly celebrate Pride Day in support of LGBTQIA+ community. Following last year's success, Pride Day returns with activations including the ClipJoint Glitter Bar, Roaming Drag Queens and giveaways.

The Racquets and Strings Program will feature performances by South Australia's top musical talent and emerging artists every day. Curated By Wasabi Entertainment, this program brings wide audience appeal to Pinky Flat, adding to the vibrant atmosphere of the event.

Local performers for Racquets & Strings at the Adelaide International include Mason Lloyde, The South Season, Kiki Courtidis, The Get Up, Simi Vuata, Dusty Lee Stephenson, with Bangaz N Ash spinning tracks Thursday through Saturday.

This year, Pinky Flat will transform into the heart of off-court excitement with the Entertainment Zone, offering food trucks, bars, a chill-out zone, and a stage showcasing talented local musicians, ensuring the energy extends beyond the tennis courts.

For the ultimate tennis experience, we're introducing a new two-tiered corporate structure, providing the most luxurious way to enjoy tennis in Adelaide. With food served directly to your seat and an exclusive bar available, you'll never miss a forehand winner or a thrilling rally.

Get ready to Vibe at The Drive as we launch the 2025 Adelaide International with unparalleled flair and prestige. Join us for an unforgettable week of world-class tennis, musical performances, and vibrant entertainment at Pinky Flat!

We can't wait to see you!



Debbie Sterrey,
Tennis SA CEO
Adelaide International
General Manager



Alicia Molik,
Adelaide International
Tournament Director

WHAT'S ON

DATE	WHAT'S ON
Saturday 4 January	Qualifying
Sunday 5 January	Qualifying Official Draw Meet the Stars at Rundle Mall
Monday 6 January Day 1 Main Draw	Mason Loyde performance at Racquets and Strings Biggest Kids' Day yet
Tuesday 7 January Day 2 Main Draw	The South Season performance at Racquets and Strings Red Ball Rumble
Wednesday 8 January Day 3 Main Draw	Kiki Courtidis performance at Racquets and Strings All Abilities Day
Thursday 9 January Quarter Finals	The Get Down and Bangaz N Ash performances at Racquets and Strings First Nations Come and Try
Friday 10 January Semifinals Womens Doubles Finals	Simi Vuata and Bangaz and Ash performances at Racquets and Strings Pride Day Hot Shots Tennis District State Final
Saturday 11 January Singles Men's Doubles Finals	Dusty Lee Stephenson and Bangaz N Ash performances at Racquets and Strings



GATE OPENING TIMES*

DATE	OPENING TIME
Monday 6 January	Day Session 11am start (Gates open 10am) Night Session NB 6:30pm (Gates open 5pm)
Tuesday 7 January	Day Session 11am start (Gates open 10am) Night Session NB 6:30pm (Gates Open 5pm)
Wednesday 8 January	Day Session 11am start (Gates open 10am) Night Session NB 6:30pm (Gates open 5pm)
Thursday 9 January	Day Session 11am start (Gates open 10am) Night Session NB 6:30pm (Gates open 5pm)
Friday 10 January	Day Session 12pm start (Gates open 11am) Night Session NB 6:30pm (Gates open 5pm)
Saturday 11 January	Twilight Session 2pm (Gates open 1pm)



*Subject to change.

*NB | Not Before.

GETTING THERE

LOCATION

The Drive, Adelaide

War Memorial Drive, North Adelaide, South Australia 5006

ENTRANCE

Entrance/s Information

All valid ticket holders and Corporate Suite ticket holders will be able to access the event via the two entrances located at The Drive. Please check your ticket to see which gate to enter from. All entrances accommodate wheelchair access.

INFORMATION

Car – Including Parking

There is no on-site parking available on War Memorial Drive during the event period. You can park at various U Parks on North Terrace and walk across the pedestrian footbridge at the Adelaide Riverbank for ease of access. To find a U Park near you, please visit <https://www.upark.com.au/>

Tram

Trams are available from Glenelg to Festival Plaza and The Entertainment Centre. There is also a city-free line throughout the Adelaide CBD to The Entertainment Centre. For timetables, route details and real-time information visit <https://www.adelaidemetro.com.au/>

Train

The train station is conveniently located a short walk from The Drive. You can access the station via all metro lines and walk across the pedestrian footbridge at the Adelaide Riverbank where you can enter the facility. For timetables, route details and real-time information visit <https://www.adelaidemetro.com.au/>

Bus

Take advantage of the free City Connector bus, offering a hop-on and hop-off service to the City and North Adelaide linking popular city attractions, shopping, dining and key destinations. Bus route 98A and 98C connect North Adelaide with the city, and 99A and 99C connect the inner-city areas not serviced by the tram. Services operate every 15 minutes on weekdays and every 30 minutes on weekends. For timetables, route details and real-time information visit www.adelaidemetro.com.au/freecitybus

Rideshare or Taxi

War Memorial Drive is closed during the event period. Please instruct all rideshares or Taxis that there are drop off zones for the Western entrance (intersection of War Memorial Drive and Montefiore Road) and Eastern entrance (intersection of War Memorial Drive and King William Road)

Bicycle

There is limited bicycle parking available on War Memorial Drive at Telstra Plaza near the Adelaide Oval ticketing booths.

E Scooter

To ride an e-scooter in the city and North Adelaide, you will need to be at least 18 years old. Simply download the Beam or Neuron app to your mobile device and then create an account, which includes payment details. As part of the account set-up, you'll receive information about responsible riding and public safety while operating and riding the scooters. When you're ready, use the app to locate and unlock e-scooters. You can park and leave the e-scooter near the entrance of The Drive, where is it safe to do so.

VENUE MAP



TICKET FAQs

How do I purchase accessible seating tickets?

Accessible seating tickets can be purchased via the General Public Ticketmaster webpage. Please select the number of wheelchairs, accessible, and/or companion card tickets you would like to purchase to view the 'Best Available' seating. For more information visit <https://help.ticketmaster.com.au/hc/en-au/articles/360006452354-Accessible-Seating-bookingsHow-to-book-including-companion-card-information>

How many tickets can I purchase at one time?

There is no limit.

What is the concession policy?

A person must have the appropriate form of concession to purchase a concession reserved seat ticket. They must present the relevant concession documentation at point of purchase and upon entry into the event. [The following are accepted forms of concession for the purchase of tickets:](#)

- Student cards: full time secondary students, full time tertiary students.
- Pension concession card: aged (AGE), bereavement allowance (BVA), carer (CAR), aged blind (AGE BLIND), parenting payment (single) (PPS), disability support pension (DSP), disability support blind (DSP BLIND), partner allowance (PTA), sickness allowance (SAL), special benefit (SPL), widow allowance (WDA), widow pension (WID), wife pension (WFA/WFD/WFW), new start allowance over 60 years (NSW/NMA), mature age allowance (MAA), mature age partner allowance (MPA), new start allowance (NSA), parenting payment (PPP/PPS).
- Veteran affairs and TPI.
- Healthcare card: exceptional circumstances relief (DR), sickness allowance (SA), special benefit (SL), farm help income support (FFR), new start allowance (NS), youth allowance (YA), new start mature age allowance (NMA), parenting payment (single) (PPS), low income (LI), carer allowance (CD), partner allowance (PA), mobility allowance (MO), and widow assistance (FA), family assistance (FA), child disability allowance (CDA).
- Personal treatment entitlement card: must be current. Please check the date carefully.

Can I transfer or change my booking to another session if I change my mind?

All ticket purchases are final, the schedule of when each player will play will be released closer to the event. On most occasions schedules for tennis are released the day before each respective session.

Will there be children's tickets available to purchase?

Children aged 3-14 as at the date a ticket is presented for entry to the Adelaide International may purchase a Kids Ticket.

Children aged 2 and under as at the date a ticket is presented for entry to the Adelaide International may enter at no charge, provided they do not occupy a reserved seat.

In relation to children who enter Adelaide International on a Kids Ticket, the following conditions apply:

- a) the child must be within the age range specified in relation to the ticket;
- b) TA may require evidence of the child's age or make a reasonable assessment of the child's age in which case that assessment will be final and determinative;
- c) the child's relevant age shall be as at the date the ticket is presented for entry to the AI (not the date of purchase); and
- d) the child must be accompanied by a parent or guardian (18 years of age or over) at all times during attendance at the AI. Parents or guardians who accompany children at the AI are responsible for the care, conduct and supervision of those children may be excluded from certain areas at the AI for safety purposes or in relation to responsible service of alcohol practices.

How do I contact customer support?

For any ticket enquiries, please contact Ticketmaster:

E: www.ticketmaster.com.au

For any general event enquiries, please contact Tennis SA:

P: 08 7224 8100

E: Adelaideinternational@tennis.com.au

EVENT FAQs

I want to see a particular player in action. When are they playing?

During the tournament, the daily schedule is updated following the last match of the evening prior. Keep up to date on socials and on the Schedule tab of the Adelaide International website to see the daily order of play.

How many matches are played in each session?

Each session will have a different number of matches. Please refer to our daily order of play to see how many matches you can enjoy in the session you have purchased.

What do I do if I lose my belongings onsite?

The Drive keeps a register of all lost property. If you misplace an item during your visit to The Drive, contact our team here. All lost property is kept for a period of four weeks, after which time appropriate items are donated to local charities.

Is smoking/vaping allowed onsite?

The Drive is a non-smoking venue. There are limited designated smoking areas available outside the venue. Please ensure you receive a pass-out to ensure re-entry is permitted.

Can I bring my pram? (including pramparking)

Prams and strollers are not permitted in seating areas.

Are there parent rooms available?

There is one parent room located at the Western side of the Level 1 Northern Concourse.

Are there ATMs/EFTPOS facilities available? (mention if cashless)

There are no ATMs within The Drive (The Drive is a cashless venue).

Where are the accessible bathrooms onsite?

Unisex accessible toilet facilities with larger, wider cubicles are available throughout the venue.

Is there cloaking or lockers available onsite?

Cloaking facilities are not available at The Drive. Items prohibited at The Drive cannot enter the venue. Please take time to review the list of prohibited items. This list can be found in the Adelaide.

Can I buy food and drink at the event?

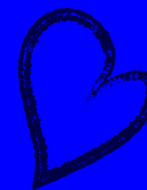
There is a dedicated food and beverage chill out precinct in Pinky Flat which features various food trucks and bars. The Drive also has fixed food and beverage outlets available at the outlets on level 1 in the North and Eastern stands. The Drive offers a wide variety of confectionery, along with soft drinks and alcoholic beverages.

Is there free drinking water onsite?

There are various water stations located around the venue where you will be able to fill up your water bottle.

Can I bring my own food and drinks to the event?

As stated under The Drive's Terms and Conditions of entry, small, non-commercial food items (including baby food) for personal consumption may be permitted but must be presented to staff for inspection upon entry.



EVENT FAQs CONTINUED...

What can/cant I bring onsite? (prohibited items list)

For the comfort and safety of patrons and players the following items are not allowed into the The Drive:

- Alcohol; animals except service animals (e.g. seeing eye dogs); any item that could be used as a weapon; beach balls and other inflatable devices, audio recorders; bicycles, scooters, skateboards and rollerblades/skates; camera tripods, monopods, telephoto camera lenses with a focal length capacity of greater than 200 mm; video cameras and handy-cams; drink and food cans; chairs and stools; eskies and hampers; fireworks; frisbees; helium balloons; glass (including bottles); large containers in excess of 1.5 litres; flags, banners or signs larger than 1.2 m wide or with handles longer than 50 cm in length; musical instruments and/or amplification equipment; unauthorised advertising or marketing material or flyers; laser pointers, distress signals, whistles or loud hailers; dangerous goods and any other item prohibited by legislation.
- Note: prams and strollers are not permitted in seating areas.

Can I bring a camera to the event?

While we want you to be able to re-live the epic experiences you have at our venue, camera equipment can get in the way of other patrons. Due to copyright laws and as a courtesy to other guests, video cameras, monopods, tripods, selfie sticks, audio recording devices and professional cameras (those including telephoto or zoom lenses) are not permitted.

Is there first aid onsite?

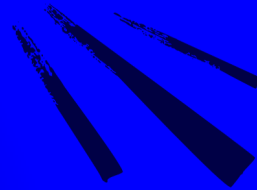
First Aid will be available on site on the rocks near the western entrance. There will be an additional private room within the northern stand if further assistance is required.

What safety measures are in place?

Tennis Australia and The Drive take the safety and security of all guests at our events very seriously. As such, you will be subjected to security checks upon entry to the arena and will be asked to comply with the direction of security guards, staff and the SA Police when on site if required.

How do I report an issue or disturbance during the event?

Please send any feedback to adelaideinternational@tennis.com.au



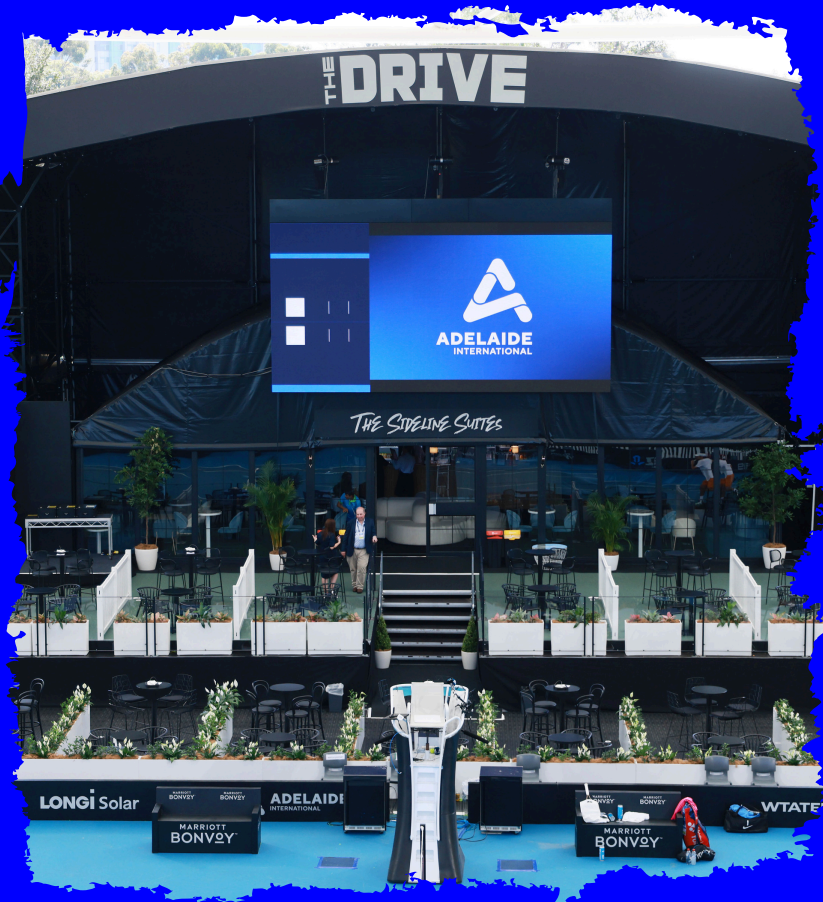
SHOP THE COLLECTION



BUY NOW

PREMIUM EXPERIENCES

THE SIDELINE SUITES



Situated on the Western side of Centre Court, The Sideline Suites redefine corporate hospitality, making it the ultimate destination to entertain your guests. What sets The Sideline Suites apart is not just the proximity to the action but the experience that comes with your ticket.

[CLICK HERE FOR MORE INFORMATION](#)

[BUY INDIVIDUAL SESSION TICKETS](#)

PREMIUM EXPERIENCES

THE COURTSIDE ROOM

Your tickets to The Courtside Room will accommodate you with elevated seating on level 2 in the Eastern Stand, and allow access to the exclusive bar, private restrooms and comfortable lounge seating inside.

[CLICK HERE FOR MORE INFORMATION](#)

[BUY TICKETS HERE](#)



PREMIUM EXPERIENCES

THE COURTSIDE CLUB

Our newest premium experience, The Courtside Club, awaits! Experience courtside like no other, seated behind the coaches' box on the eastern side of court like a true tennis aficionado.

[CLICK HERE FOR MORE INFORMATION](#)

[BUY INDIVIDUAL SESSION TICKETS HERE](#)



RACQUETS AND STRINGS



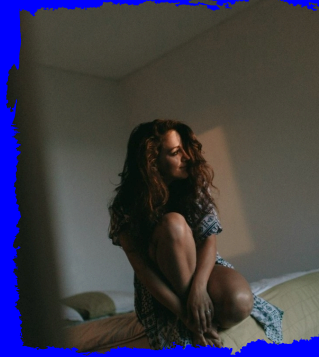
MASON LLYODE

Performing Monday in the Entertainment Zone.



THE SOUTH SEASON

Performing Tuesday in the Entertainment Zone.



KIKI COURTIDIS

Performing Wednesday in the Entertainment Zone.



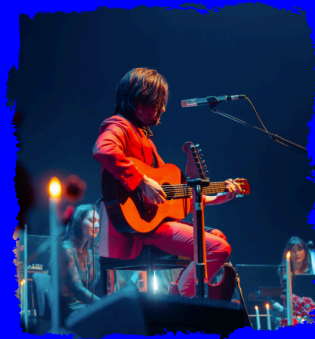
THE GET DOWN

Performing Thursday in the Entertainment Zone.



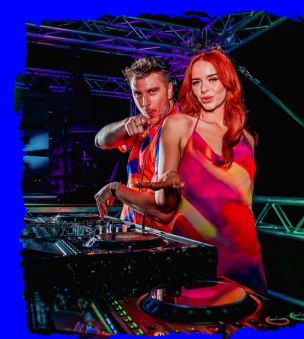
SIMI VUATA

Performing Friday in the Entertainment Zone during Pride Day.



DUSTY LEE STEPHENSON

Performing Saturday in the Entertainment Zone for the finals.



BANGAZ N ASH

Performing Thursday, Friday and Saturday.

Thursday - DJ Kai Ward
Friday - DJ Ashie
Saturday - DJ Kai Ward

CONNECT WITH US

Facebook: @AdelaideInternationalTennis
Instagram: @AdelaideInternational
#AdelaideTennis
#SeeSouthAustralia
X: @AdelaideTennis @Tennis-SouthAustralia
LinkedIn: Visit Adelaide
Website: www.adelaideinternational.com.au





ADELAIDE
INTERNATIONAL

THANK YOU!